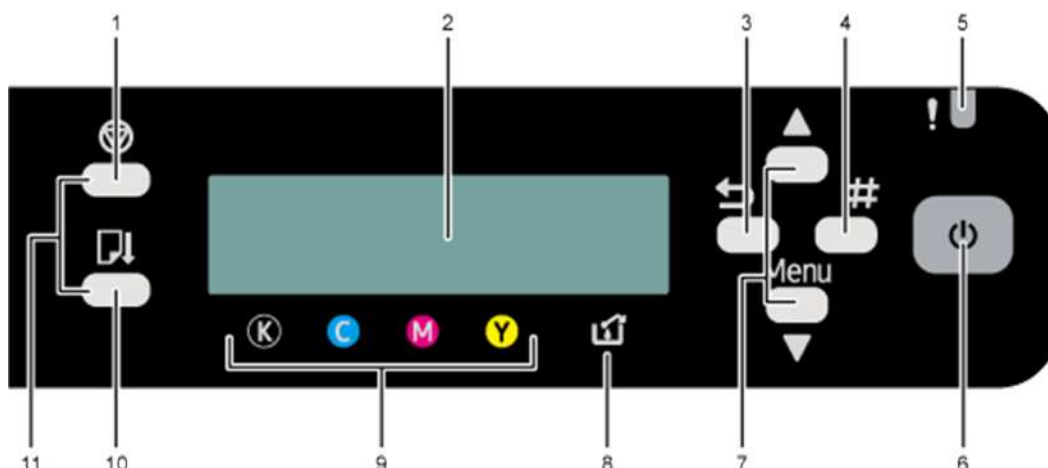


SG 3110
QUICK GUIDE





CONTROL PANEL <i>An overview of the function buttons.</i>	Page 1
REPLACING TONER <i>The process for replacing toner cartridges.</i>	Page 2
PAPER JAMS – TRAY 1 <i>Remove paper jammed in tray 1.</i>	Page 3
PAPER JAMS – TRAYS 2&3 <i>Remove paper jammed in trays 2&3.</i>	Page 4
PAPER JAMS – REAR COVER <i>Remove paper jammed at the rear of the device.</i>	Page 5
PAPER JAMS – DUPLEX UNIT <i>Remove paper jammed in the duplex unit.</i>	Page 6
PAPER JAMS – TOP COVER <i>Remove paper jammed in the top section of the device.</i>	Page 7



1.[Job Reset] key

When the machine is online, press this key to cancel an ongoing print job.

2.Display

Displays the current machine status and messages.

3.[Escape] key

Press this key to return to the previous condition on the display.

4.[#Enter] key

Press this key to execute menu items selected on the display.

5.Alert indicator

Lights up or blinks whenever a machine error occurs.

If the red light is on, follow the instructions that appear on the display.

6.[Power] key

Press this key to turn the power on. To turn the power off, press and hold down this key for one second. Blinks when the machine is receiving data from a computer or if there is data to be printed.

7.[/Menu] keys

Use these keys to increase or decrease values on the display when making settings.

Keep the key pressed to quicken scrolling and increase or decrease values in units of 10.

8.Waste ink full indicator

The amount of waste ink is indicated on the six-level display. A message appears when it is time to replace the ink collector unit.

9.Cartridge replacement indicator

Each color corresponds to a print cartridge. K, C, M, and Y indicate black, cyan, magenta, and yellow, respectively. The amount of ink remaining in each print cartridge is indicated on the six-level display.

10.[Form Feed] key

You can use this to force the machine to print data received when the paper size or type does not match the actual size or type of paper loaded in the tray. If there is a paper jam, press this key according to the displayed error message and remove the jammed paper.

If a print job using the PCL driver does not start, press this key to force it to print.

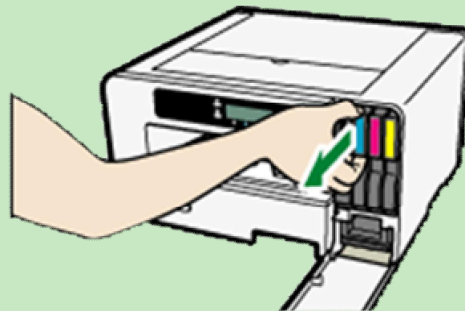
11.Press[10] & [1] together to perform head cleaning for all colours in standby mode.



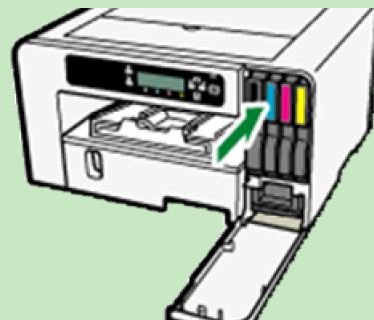
- 1 Open the cover on the right-hand side.



- 2 Hold the device firmly so that it does not move. Take out the empty cartridges.



- 3 Check cartridges' orientation. Install in the following order: black, cyan, magenta, yellow.



- 4 Push each cartridge fully in. Then close the cover.





- 1 Hold the grip on Tray 1, lift the tray slightly (1), and then pull it all the way out (2).



- 2 Open the output ramp, and then remove the jammed paper.



- 3 Close the output ramp.



- 4 Push tray 1 gently back in until it stops.





- 1 Hold the grip on the tray and lift it slightly (1), and then pull it all the way out (2).



- 2 Remove the jammed paper.



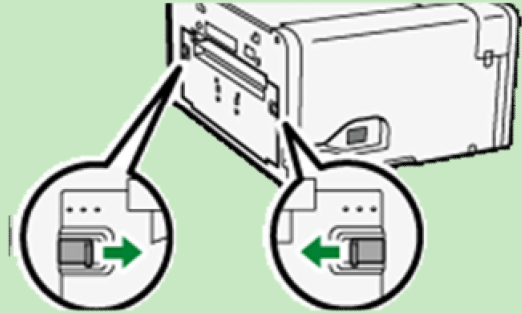
- 3 Push the tray gently back in until it stops.





1

Slide the tabs to unlock, and then remove the rear cover.



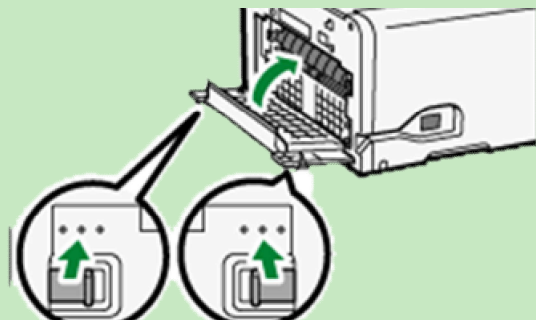
2

Remove the jammed paper.



3

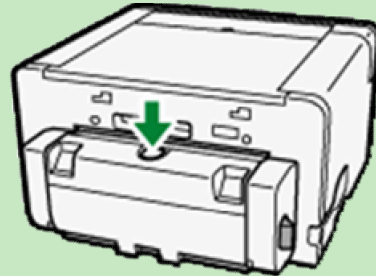
Close the rear cover and return tabs to original position.





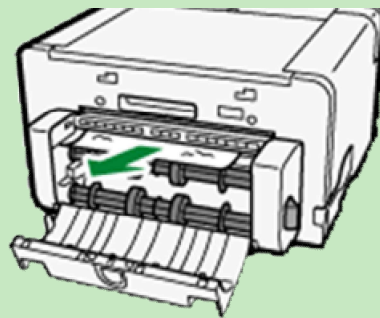
1

Press the duplex unit cover button, and open the duplex unit cover.



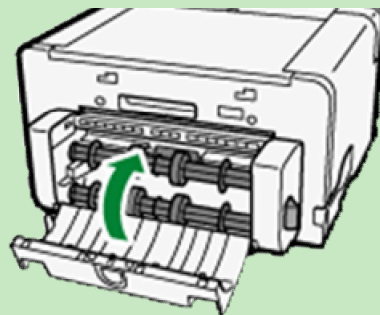
2

Remove the jammed paper.



3

Close the duplex unit cover.





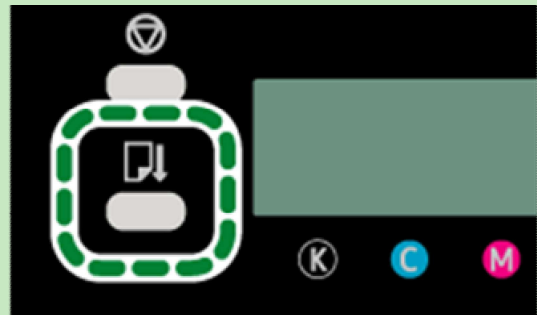
1

Open the top cover.
Take care not to snag
any cables or ink
tubes.



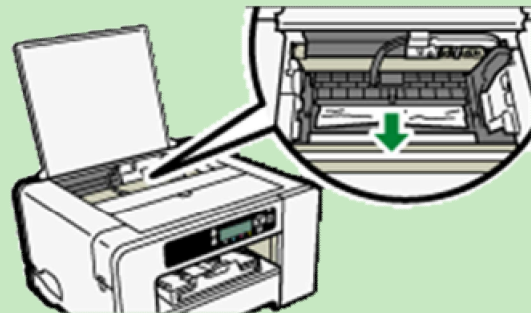
2

Press the [Form Feed]
key.



3

Remove the jammed
paper. If the print head
has stopped halfway,
move it to either end.



4

Close the top cover.





RICOH
imagine. change.

RICOH NZ LTD

60 Stanley Street, Parnell, Auckland
Tel: 0800 807676