



CONSULT



INNOVATE



SUPPORT



SUSTAIN



GLOBAL



Project Summary

Client: Hagley College

Location: Christchurch

Sector: Education

Network size: 150 Macs and 400 PCs

Challenges: Managing printing and copying costs, paper wastage, accurate cost allocation.

Solution: Ricoh devices paired with Equitrac® Print & Copy Control software.

RICOH

Ricoh New Zealand Head Office
60 Stanley Street, Parnell
P.O.Box 68024 Newton
Auckland 1145, New Zealand

Ph: 09 374 0701 Email: ricohnz@ricoh.co.nz
www.ricoh.co.nz



Managing costs and environmental impact; an educated choice for Hagley College



Hagley College's impressive main building.

Using technology to empower individuals to make environmentally and economically sensible printing decisions sounds like a dream, but that's exactly what a distinctive New Zealand secondary school has achieved with a little bit of help from Ricoh.

Background

Christchurch's Hagley College provides a mature learning environment for 1,600 students that is more akin to a polytechnic or university. It has seen students thriving, with 42% eventually graduating from a New Zealand university.

Such a large and dynamic organisation needs to be supported by an equally robust network of computers, plus printing and copying equipment. So when Sue Grigor and Mark Tull (ICT Managers) decided to undertake a review of their printing/copying solutions they had plenty to think about.

Challenges

Managing printing and copying costs across the college had become very difficult, because each of the college's 15 departments had their own printing and copying budgets, individually purchasing copiers, printers, ink and paper.

Often departments would buy low cost inkjet printers, with little thought given to the high cost of the cartridges required to run them. Mark had tried to get 'cost per print'

information from the printer suppliers, but frustratingly this information was not forthcoming.

Getting all staff and students to think environmentally was another desire. Up until the review, inefficiencies were easy to spot: for instance many of the staff and students had been printing single sided. They did not differentiate between desktop printers and more cost effective multifunctional devices (MFDs)* and as is typical with most organisations unwanted print-outs gathered on machines daily.



Solution

As part of an extensive market review process Sue and Mark contacted a Ricoh consultant. He listened to their concerns and was able to recommend a selection of Ricoh MFDs and printers paired together with Equitrac Print & Copy Control software.

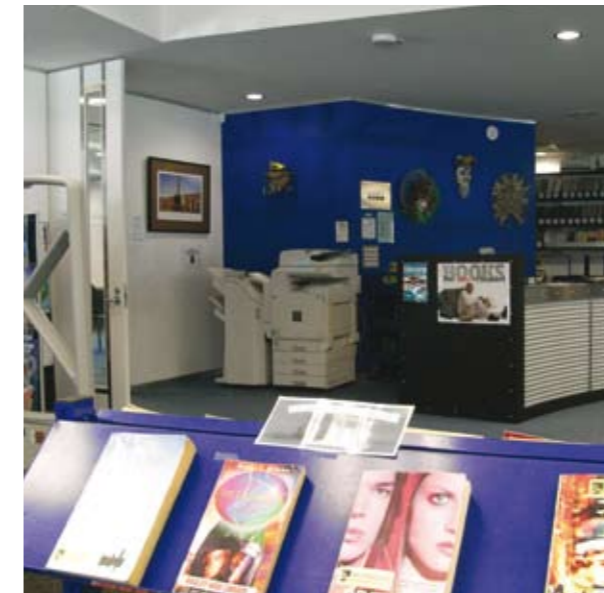
Benefits

The benefits of the new system have been immediate and varied: accurate allocation of printing and copying costs

*Multifunctional devices (MFDs): A single machine that, depending on options selected, acts as your copier, printer, scanner and fax.

back to each user has been achieved, with each student having their own account they can buy credit for, and staff usage accurately allocated back to their department.

Significantly, when a staff member or student selects print, a pop-up box on their PC/Mac tells them how much the job will cost. This 'cost preview' functionality has encouraged use of more cost effective MFDs rather than desktop printers. Previously staff were mostly printing single sided, now with Equitrac, they normally print double sided as they are aware of the paper usage and cost. As Mark says "we're decreasing our carbon footprint."



One of the Ricoh MFDs, located in the college's library.

Departmental cost management has also been simplified, with Equitrac generating activity reports by department and individual user, and breaking it out into spend on black and white and colour. As Sue says "before we had no idea what the college was spending on copying and printing, now we do, budgeting has become much more accurate".

Keeping machines in working order has become much more straightforward for Sue. The status of all the college's MFDs and printers can now be monitored from the comfort of her desk. So if a printer drawer is left open or a print job is holding up the queue she knows why things aren't working and can quickly take action.

“Before we had no idea what the college was spending on copying and printing, now we do. Budgeting has become much more accurate.”

Another clever feature of Equitrac is it's Follow-You™ technology. This allows staff to send a job to print (even from home!) and release it at a convenient time from any enabled device by keying in their code at the MFD/ printer. This ensures confidential documents are not left lying around and unwanted print outs are not left at the printer reducing wastage.

“It just works” Sue Grigor, ICT Manager.

Why Ricoh

As Sue recalls "Ricoh took us to visit customer reference sites, so we could see other organisations already successfully using Ricoh's solution". She adds "our previous good experience with Ricoh gave us confidence in the company, their technical support people and their service response times".

To learn more about Ricoh's solutions or to book your own meeting with a Ricoh consultant contact us on 0800 2 RICOH (274264).

Equitrac

Track all your printing and copying costs while managing your entire document output for maximum efficiency, security and return on investment.

Benefits

- Accurate allocation of printing and copying costs back to each user, department, project or client
- Cost savings by directing output to the most efficient devices and eliminating unauthorised, excessive or wasteful printing
- Prevent unauthorised MFD/printer use with PIN or swipe card authentication
- Simplified administration improves service levels and reduces help desk calls
- Environmental benefits through the reduction of resources consumed.