



Extended Colour Performance for Short Print Runs

Aficio™ MP C2500e1/MP C3000e1 Aficio™ MP C3500e1/MP C4500e1

The Aficio™MP C2500e1/MP C3000e1 and Aficio™MP C3500e1/MP C4500e1 are ideal solutions for general offices with short-run, full colour jobs that require superb image quality. PostScript® and PDF-oriented office environments now have the chance to upgrade their in-house produced colour output even more. These easy to use multifunctionals are equipped with pre-configured colour controllers which provide a variety of highly valued Fieri utilities, colour management features, flexible finishing capabilities and state-of-the-art workflow solutions. Thick paper handling, booklet finishing and variable data printing are only a few of the amazing features. Ricoh maximises your colour capabilities again.

Advanced Colour Management

The Aficio™MP C2500e1/MP C3000e1 and Aficio™MP C3500e1/MP C4500e1 deliver the highest quality colour output, whether you are printing eye-catching flyers or colour intensive reports.

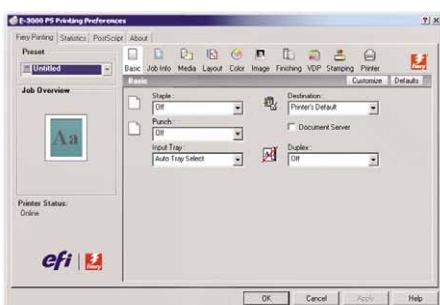


- For precise colour production from all applications, platforms and file formats, turn to the user friendly EFI Fieri ColorWise Pro Tools™ colour management software suite.
- The calibrator module ensures consistent colour output under any condition.
- Accurately simulate the output of other colour devices by matching selected colour space parameters (Euroscale/SWOP coated/None) with the CMYK Simulation tool.
- Manage spot colour in PostScript® or PDF documents using dedicated look-up tables.
- Reduce halving and other unwanted colour defects when printing black text and graphics on a coloured background thanks to the Black Overprint functionality.

Superb Page Setting

Increase your flexibility and productivity by automatically arranging the pages of your print jobs to your specifications using the Aficio™MP C2500e1/MP C3000e1 and Aficio™MP C3500e1/MP C4500e1's range of straightforward imposition tools.

- Enhance your workflow and cut your production time in half using Double Print and Speed Print to facilitate and speed up the creation of sets.
- Print documents that are folded and stacked in booklet order via Booklet Imposition and Perfect Print to further improve your workflow productivity.
- Print documents with various paper types and weights in one single run with the convenient Mixed Media setting.



Ricoh's pre-configured colour controllers offer an easy to use, icon based interface that highlights the most commonly used printing options.



Booklet Imposition



Speed Print

Cut your production time in half with a wealth of workflow features.



Aficio™ MP C2500e1/MP C3000e1 Aficio™ MP C3500e1/MP C4500e1

Command WorkStation™ 4.5

Command WorkStation™ 4.5 puts you in full control of all your document input and output. With this software tool you can maximise your productivity, monitor your job queue and control multiple Fiery driven engines.

- Jobs can be merged and overridden, and frequently recurring jobs can be stored for easy reprinting.
- Individual jobs can be prioritised, while jobs that require specific machine configurations or paper types can be grouped at the touch of a button.
- To facilitate cost management and accurate allocation to individuals or departments, the job log function produces a print job summary.
- For easy proofing and document merging with drag and drop simplicity, the Preview function displays your print jobs as thumbnails.
- Edit text, modify colours, and move and copy graphics easily without using other graphics applications using the optional EFI Impose.

Variable Data Printing

Documents which are partly standardised, partly variable (mailings, letters, catalogues, statements, etc.) can now be effortlessly reproduced in one smooth run. Fiery FreeForm2™ distinguishes between master and variable data to support faster document processing and less network traffic.



Variable Data Printing allows you to limit the need for outsourcing and print unique documents in one print run in-house!

SPECIFICATIONS

Print speed:	B/W / full colour:	MP C2500e1: 25/25 ppm MP C3000e1: 30/30 ppm MP C3500e1: 35/35 ppm MP C4500e1: 45/40 ppm
Controller type:	External	
Interface:	Ethernet 10 base-T/100 base-TX/1000 base-T	
Network protocol:	TCP/IP, IPX/SPX, SMB, AppleTalk (Auto Switching)	
Printer language/ resolution:	Adobe® PostScript® 3™, PCL5c, PCL6: 600 dpi	
CPU:	Intel Celeron 2 GHz	
Memory capacity:	256 MB	
HDD:	80 GB	
Supported environments:	Windows® 2000/XP/Server 2003 Macintosh X (10.2.8 or later)	
Utility software:	Standard:	EFI Command WorkStation™ Windows® Edition v4.5 EFI Command WorkStation™ Macintosh Edition v1.2 EFI Fiery ColorWise Pro Tools™ Fiery WebTools™ Fiery Remote Scan™ (application, TWAIN plug-in) Fiery Email Port Monitor Fiery® FreeForm2™ Fiery Printer Delete Utility
	Option:	EFI Impose Auto Trapping Spot On EFI Hot Folders EFI Color Profiler

For availability of models, optional apparatus and software, please consult your local Ricoh supplier. For detailed specifications of the Aficio™MP C2500/MP C3000 and Aficio™MP C3500/MP C4500, please visit www.ricoh-europe.com or consult the individual product brochures.



ISO9001: 2000 certified
ISO14001 certified

Ricoh believes in conserving the earth's precious natural resources. This brochure is printed on environmentally friendly paper: 50% recycled fibres, 50% chlorine free bleached pulp.

All brand and/or product names are trademarks of their respective owners.

Specifications and external appearance are subject to change without notice. The colour of the actual product may vary from the colour shown in the brochure.

Copyright © 2007 Ricoh Europe B.V. All rights reserved. This brochure, its contents and/or layout may not be modified and/or adapted, copied in part or in whole and/or incorporated into other works without the prior written permission of Ricoh Europe B.V.

RICOH

For more information, please contact:

RICOH EUROPE B.V.
P.O. Box 114, 1180 AC Amstelveen,
The Netherlands.
Phone: +31 (0)20 54 74 111
Fax: +31 (0)20 54 74 222

www.ricoh-europe.com