

TE PŪRONGO A RICOH

HE WHAKAATURANGA O TĀ MĀTAU WHAKARITENGA PŪTEA, PŪTEA-KORE HOKI

2016

TŌ MĀTAU KUNENGA MAI

Te whakamahi i ā
mātau hangarau hou
hei whakapai ake i
te mahi ngātahi me
te whakaheke
whakapaunga

TE TAPEKE MATUA

Tuatahi i te rohe o
Āhia-Te Moananui-a-
Kiwa o Ricoh

TŌ MĀTAU HAPORI

Te eke pahikara
mō te mate
pukupuku NET

TE TAIAO

Te kaupapa
tukurua ī-para
whaimana
ā-motu

WHAKAARO

Te whakahaere
i ngā mea
tāparepare

RICOH
imagine. change.

Kia ora

E tuhi nei ahau i tēnei kōrero whakataki i runga i te tino ngākau whakahī mō tā mātau Pūrongo Toitūtanga tuaiwa. Mai i te tau 2008 e tuku pūrongo ana a Ricoh New Zealand mō ana mahinga pūtea me te pūtea-kore, ā, i roto i tēnei wā kua kite mātau kua kaha haere tō mātau ahurea whakapai ake. Kei te mōhio mātau kei te āhua o tā mātau mahi i ngā mahi o ia rā e tino kakama ake, tōtika ake hoki mātau puta noa i ngā tapeke matua e toru. Ā, ka tino kitea tēnei i ahau ka heri haere i ā mātau kiritaki i te rūma mēra matua.

180 ngā tāngata kei tō mātau tari matua Kākāriki Whetū 5 o Tāmaki Makaurau, engari kāore pea koe e kite i tētahi pepa kotahi i tō mātau rūma mēra. He tino nui ngā mahi pakihi e mahia ana i ia rā mā ngā kiritaki 8000 me ngā pūrere tā 40,000 ka mutu ka mahia tēnei me te tino iti o te rārangi ā-pepa.

He nui rawa ā tātau kōrero kei te noho mai ki runga pepa me te aha ehara tēnei i te āhuatanga kakama, he nui rawa te utu, ā, he tūkino i te taiao. He autō te pepa i ngā tūmahi, he nui ake ngā hapa, ka mutu me whai wāhi hei putu me ngā pūnaha hei tiki mai anō.

E whakaata ana tō mātau rūma mēra i te hiranga o ngā kohinga me te rokiroki raraunga matihiko, tāhiko hoki mō ngā pakihi e whai ana kia momoho haere tonu atu.

“E hiamō ana mātau ki te whakarewa i te Unified Communications System (UCS) a Ricoh i tēnei tau tuku pūrongo.”

He hangarau te UCS e taea ai ngā whakawhitiwhiti ā-kite me te tangata, ahakoa te wā, te wāhi, e penapena moni ai nā te kore haerenga, e pai ake ai te whakapau wā me te whakapiki i te mahi ngātahi a ngā tari.

Nā te Whakaaetanga o Parī i mahara anō ai tātau kia aro nui ki te whakaiti i ngā tukunga haurehu kati mahana, ā, he tikanga whaitake tā mātau UCS mā ngā whakahaere hei whakaheke i ā rātau mahuetanga.

Ko ngā tari atamai anamata ko ērā e whakamahi ana i ngā pūnaha atamai—ngā pūnaha whakahaere kōrero e taea māmātia ai, e wātea ana i ngā wā katoa, ā, he haumaruru hoki. He hua kei te puta i ngā pūnaha pakihi atamai ki te toitūtanga o ngā whakahaere, ā, pēnei i tō mātau.

Ko tō mātau tohungatanga ko ngā pūnaha kakama tino nunui, ā, he tono nāku tēnei ki a koe kia pānuitia ngā kōrero mō mātau me te huarahi e takahia ana e mātau ki te toitūtanga.



Mike Pollok

Tumuaiki Kaiwhakahaere
Ricoch New Zealand

Rārangi Upoko



Tō mātau kunenga mai
Kei roto mātau i te pakihi takahuri

3



Tō mātau hapori
Fred Hollows

8



Ngā ia anamata
Ngā Rongoā Pakihi

14

Mō mātau 4
Ricoch Global me Ricoh NZ

Ā mātau tāngata 6
He whakaaturanga o ngā kaimahi a Ricoh NZ

Tō mātau hapori 9
Ā mātau whitiwhiti kōrero ā-motu, ā-rohe hoki

Te taiao 10
Ā mātau tapuwae waro

Ngā pou tarāwaho whakahaerenga pakihi .. 12
Te tuku hanganga ki tā mātau rautaki toitūtanga

Te heipūtanga mai o te hurihuringa 13
James Griffin a SBN e kōrero ana mō te whakahaere i ngā mea tāpareare

Rōpū ētita

Carley Young
Ten Four Communications Limited
carley@tenfourcommunications.co.nz

Murray Clark
Kaiwhakahaere Tauhokohoko, Ricoh New Zealand
mclark@ricoh.co.nz

Kairuruku Toitūtanga

Helen Mahoney

Auaha

Minal Fakir

Whakapā atu ki a Ricoh

Ricoch New Zealand
200 Victoria Street West CBD, Tāmaki Makaurau 1010
0800 80 76 76
www.ricoh.co.nz
communications@ricoh.co.nz



Pikitia kei te uhi o mua:

Mahi ngātahi me te Unified Communications System (UCS) hou a Ricoh. Te hangarau e whakaheke ana i ngā whakapaunga haerenga, me te whakapai ake i te whakapau wā me te mahi ngātahi ā-tari.

Ahakoa ō hiahia, me mōhio koe ka whakaratoa e mātau ngā rongoā me ngā ratonga rawe rawa.

Ina kōwhiri koe i ngā hangarau Ricoh kei te haumi koe ki ngā utauta ā-tari hou rawa, whaikaiko hoki e wātea ana i ēnei rā. Me te aha, hei arotua ke i tō haumitanga, e whakaratou ana mātau i a koe ki ngā ratonga me ngā tautoko mātāmua o te rāngai, pēnei i tā mātau ota pauratuhi aunoa, ine mīta me ngā ratonga, me tā mātau kaupapa tauwhiro whaitake.



Ricoh Global

I tīmatahia i te
tau 1936



Kei Tokyo te tari matua, ā,
he maha ngā tari kei ngā
whenua neke atu i te 200



Te kamupene hangarau
tuawaru nui rawa i te ao



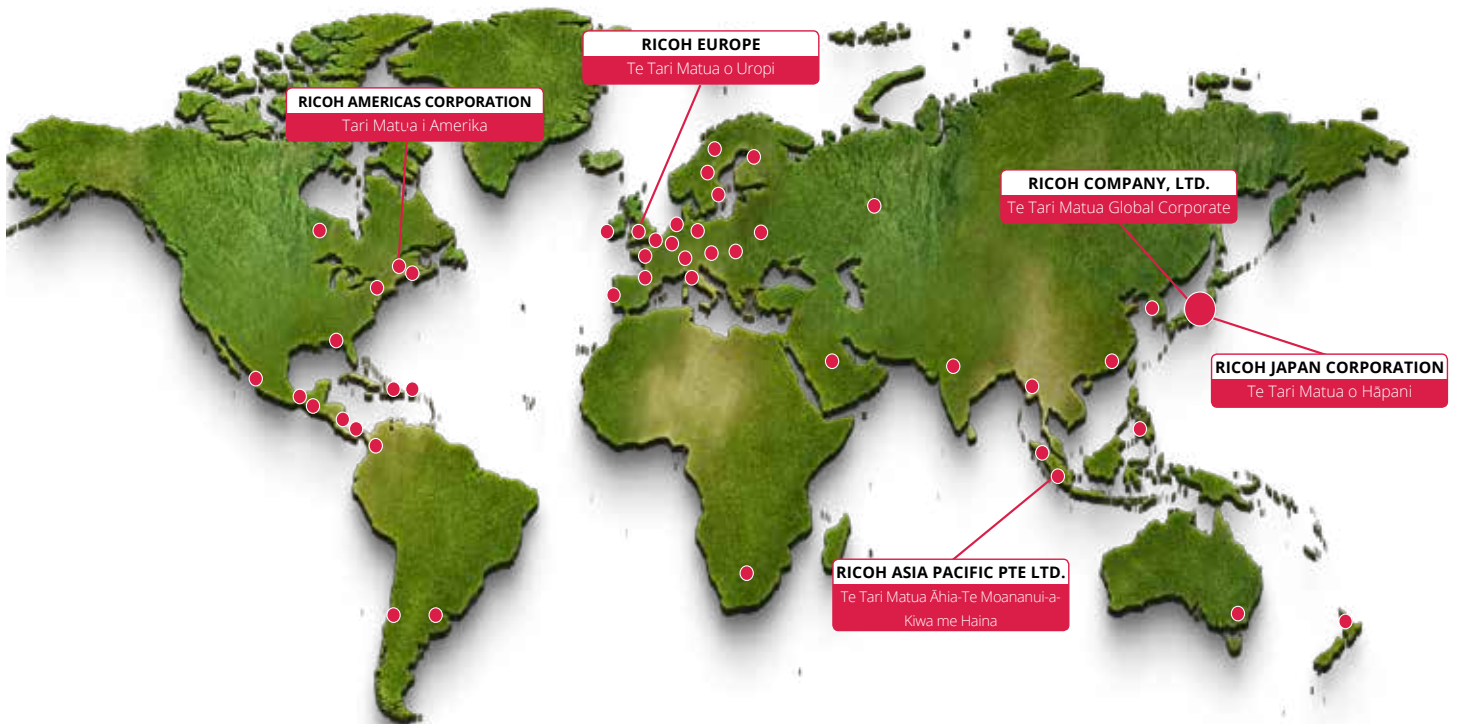
He 5.3% o ngā hokonga
tapeke i riro mai ki
te rangahau me te
whakawhanaketanga i te
tau pūtea 2016, tata ana
tēnei ki te ¥ 118.5 piriona

E 3,584 ngā whakamana ā-ture i whakaputaina
i Hāpana i te tau pūtea 2016.
E mau ana i ngā mana ki ngā whakamana ā-ture neke atu
i te 24,000 i Hāpana, ā, neke atu i te 24,000 i tāwāhi



I āhukahukatia e te
Ethisphere Institute hei
Kamupene Matatika Rawa®
i te tau 2016 i te Ao

I whiwhi i te whakataunga
kōura teitei rawa mō te
rangahau kaiwhakarato
tōitutanga i whakahaeretia
e EcoVadis



I tēnei tau...

1,148

miriona ¥

**TŪTANGA
KAIWHIWHI HEA**

1.28

**MONI WHAKAWHITI KI
TĀWĀHI ĀWHIWHI I TE
31 POUTŪTERANGI 2016**
¥100 = NZ\$77.82

109,361

**NGĀ KAIMAHI
I TE AO**

2,209

piriona ¥

MORE NGĀ HOKOHOKO

Ricoh New Zealand

I tino eke anō ngā mahi hokohoko a Ricoh NZ i tēnei tau, i eke ngā hokohoko more ki te \$136.7 miriona. He mea nui tēnei i te mea i te paku heke ngā moni whiwhinga me te piki o ngā whakapaunga.

Kei te kaha te tūranga pūtea o te kamupene me te pūrongo anō i eke ki te tūranga tiketike mō ngā hua i te rohe o Āhia-Te Moananui-a-Kiwa o Ricoh.



KĪ MAHERE

RICOH
PEKA



TARI RICOH
Ā-ROHE



He kamupene peka nā Ricoh Global, i whakatūhia i te tau 1970



E ono ngā peka matua, ā, 19 ngā tari ā-rohe e tuku ratonga ana puta noa i te motu



Ngā hua i mua i te tāke

NZD
\$8.5m

Ngā tāke kamupene i utua

NZD
\$2.1m

136.7

miriona NZD

NGĀ HOKOHOKO
MORE

65.5

miriona NZD

TŪTANGA
KAIWHIWHI HEA

366

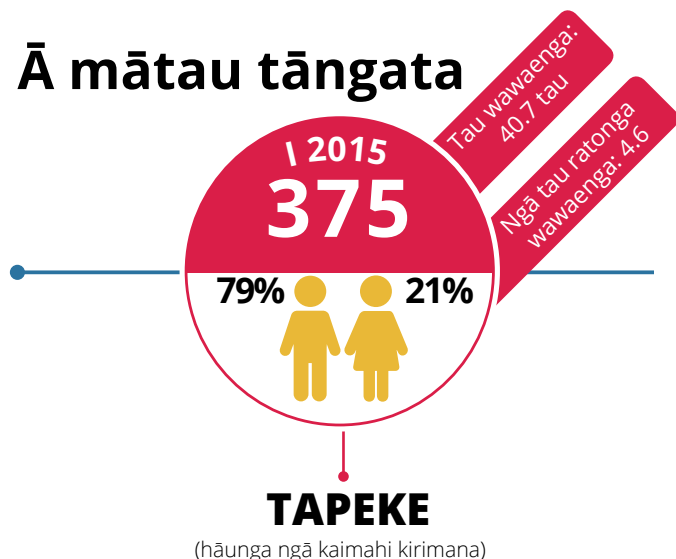
AOTEAROA
NGĀ KAIMAHI

26.8

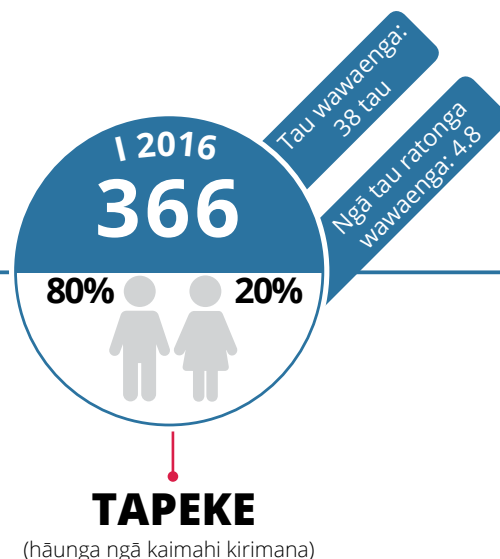
miriona NZD

I WHAKAPAUA KI NGĀ UTU
Ā-TAU ME NGĀ UTU Ā-WIKI

Ā mātau tāngata



KI



Kanorautanga Ira Tangata

Ngā wāhine kei te rōpū whakahaerenga

Ko Robyn Horsburgh-Pearce te Kaiwhakahaere Nama me te Pire a Ricoh. Kei te whakahaerehia e ia ngā kaimahi 16 mai i te tari matua o te kamupene i Tāmaki Makaurau. Kua whitu tau a Robyn e mahi ana mā Ricoh, ā, i a ia te tūranga Kaiwhakahaere Nama i mua.

I te mea he tāne te nuinga o ngā kaimahi kei te ahumahi rongoā tuinga, e whakapono ana ahau he mea tino nui kia whai ngā wāhine i ngā tūranga whakahaerenga.

E rua aku tamāhine, ki ahau he mea nui mō rāua kia kite i tō rāua māmā e

whakapau kaha ana, ā, kia whakanuitia hoki aua mahi. Waihoki i te tari, mēnā ka taea e au ētahi atu wāhine i tōku taha te whakahihiri kia eke ki ngā taumata ka harikoa ahau.

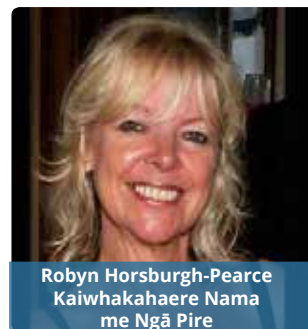
I te tīmatanga o tōku umanga mahi ko te whakaaro i roto i ahau i te mea he wahine ahau i roto i te ao pakihi, ā, me whawhai ahau kia puta ai ōku whakaaro me te aha kāore ahau i arohia mai nā tea mea he wahine ahau. Ngā whakamoemiti kua kore e pērā ināianei.

He wāhine te nuinga o tōku rōpū. He rerekē ngā tirohanga a te wahine, ā, kia ahau he mea nui kia uru pai mai rātau ki ngā whiriwhiringa whānui. E toru anake ngā tāne o taku rōpū 16, he rerekē tēnei ki te ōwhehenga tāne/wāhine i konei i Ricoh.

He kanorau tōku rōpū e ai ki ngā tau me te ahurea, ā, kei te tino pai te haere. E mahi tahi ana tō mātau rōpū o te nama, kirimana, pire hei rōpū kotahi ki te

whakarato i te katoa o te pakihi. Kei te ū tētahi ki tētahi, ā, he mea tino nui tērā.

Ko te mea tino pai ki ahau mō Ricoh ka taea e ngā tāngata katoa te tuku whakaaro ki te rōpū whakahaerenga matua. Me te aha, kāore he whakawāwā nā wai ake te mahi ki te whakaputa whakaaro; ka whiriwhirihia ngā whakaaro katoa, ā, ka whakanuia ēnei.



Te Ricoh Way Excellence Award

I toa i a Ricoh New Zealand tētahi tohu kamupene hira—te Ricoh Way Excellence Award—mō tana kaupapa RIFLE+.

Ko te kaupapa o te tohu mō ngā mahi me ngā mahinga auahi e puta ai he uara kiritaki hou, ā, i tukuna ki a Darren Elmore, Kaiwhakahaere Tautoko Hangarau ā-Motu, i Tōkio i te Hakihea 2015 mō te rōpū RIFLE+.

Ko te RIFLE+ ko te Ricoh Intelligent Fault Logging Engine, ā, he pūmanawa rorohiko i waihangatia e te pakihi hei whakapai ake i ngā wā urupare hapa a Ricoh me te whakapai ake i te wheako kiritaki.

He hātepe a RIFLE+ e tātari ana i ngā hapa utauta ka taea ina waea mai he kiritaki me tētahi raruraru.

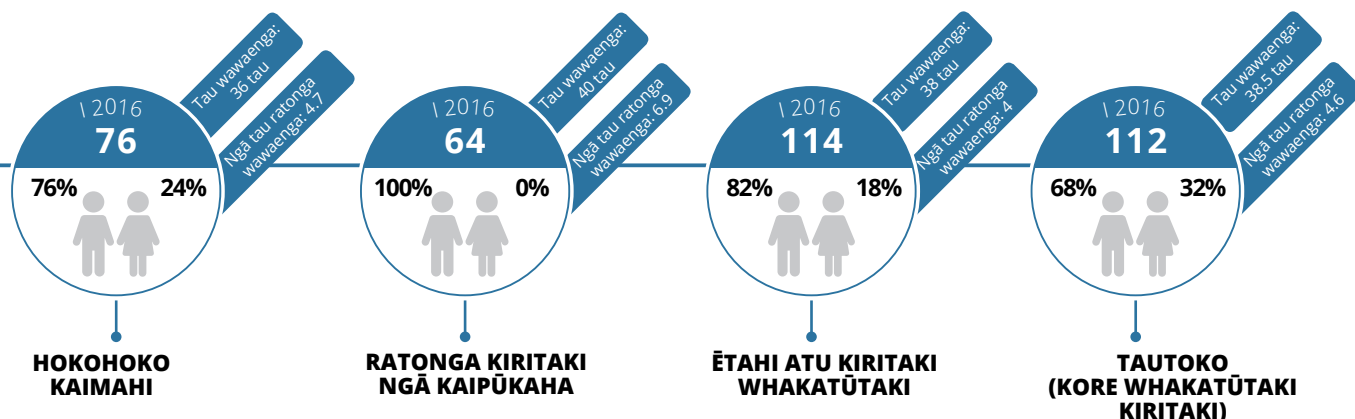
“Ka āwhina a RIFLE+ i a mātau ki te whakarite he aha ngā pūtake ka taea mō tētahi hapa mīhini kia pai ai te tuku atu i te kaupūkaha tika me ngā wāhanga tika, i te wā tuatahi,” te kī a Darren.

“He tūhono anō i te Ricoh @remote system (he utauta tātaritanga mamao mō ngā pūrere Ricoh) kia taea ai e ngā kaupūkaha ngā rokiroki waea ratonga me ngā rangitaki puru pepa mō te mīhini kei te tirohia, ā, me te mōhio tōmua mō ngā whakahōu pūmanawa mārō e hiahiatia ana.”

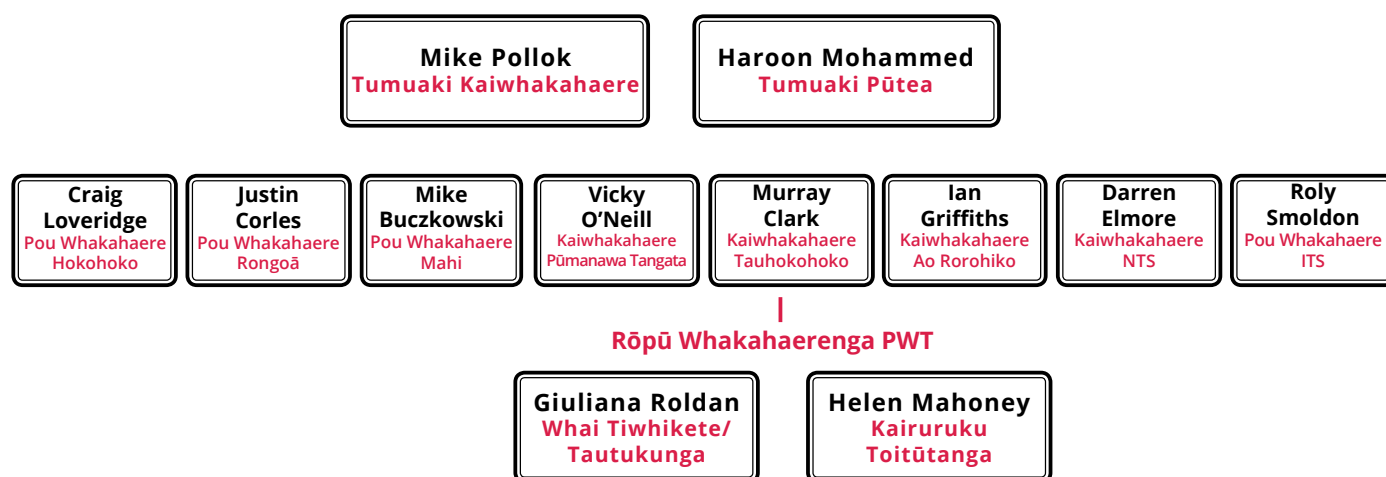
Ko te hua ka puta ko te piki o te wā e mahi ana te mīhini me te piki o te rata o te kiritaki, e kī ana a Darren, koinei te kaupapa nui o te pūmanawa rorohiko.

“Ko te whāinga ake kia māmā ake ki ngā hoa mahi me ā mātau kiritaki, me te aha he tino rawe kia whakanuia i waenga i te whānau Ricoh whānui.”





Tari matua Ricoh New Zealand



Pūnaha Whakahaere Taiao (PWT)

Richard Sterling Pokapū Whakarātonga ā-Motu	"He oranga ngākau te whakauru mai me te mōhio anō he huarahi tō mātau tukuruā, otirā mō te rahi ka whiwhi mātau i konei i te PWA. I whai wāhi tō mātau rōpū ki ngā kaupapa maha, tae atu ki Earth Hour. He mea nui ki a mātau te kōkiri i te toitūtanga i roto i tō mātau peka."	Lisa Kovalski Kirikiriroa	"Mā ngā tautoko haere tonu mai i te Kaiwhakahaere Peka, kua whakatinanahia e mātau ngā tukanga hou mō te toitūtanga, tae atu ki te tukuruā kirihou, kēne, karāhe me ngā para kai, ā, i whakahaerehia e mātau tā mātau rā taiao kaimahi tuatahi i te Mahuru 2016 i te wā o te Keep New Zealand Beautiful Week."
Ashleigh Garrett Tāmaki Makaurau	"I tō mātau tari matua i Tāmaki Makaurau, ko ngā whakatau katoa ka whiriwhirihia e ai ki te pānga ki tā mātau pakihi mai i te tūranga toitūtanga. Ia kaiwhakarato, ia tukanga, ia hokotanga ka whakatauhia i runga i tēnei, ā, i pēnei anō i te wā pūrongo ā-tau. He uara matua te toitūtanga mō Ricoh, ā, me whakatinana mātau i te kōrero."	Brendon Nilsen Te Whanganui-a-Tara	"I arotahi tō mātau peka ki te whai i tētahi tikanga whaikiko, kawenga hoki mō te whakawātea i ā mātau para kirimā. Kua tuia he whanaungatanga me tētahi kaitukuruā kirimā o te rohe, PolyPalace, e tukuruā ana i ngā para kirimā ka huria ki ngā hua ārai mātao arumoni maha."
Ben Sykes Ōtepoti	"Kua tino piki ake tā mātau kaupapa tukuruā i-para i tēnei tau, ā, e rua ki te toru ngā kereiti kei te tukuruā mātau i tēnei wā mā Croxley i ia wiki. I te mea kua kore e taea e tā mātau kaitukuruā kirimā o te rohe te tukuruā i tēnei hua, he tino hua mō mātau te whakauru i te kirimā ki ā mātau i-para, e tino iti ake ā mātau para ka tukuna ki te ruapara."	Porsha Landman Te Papaioea	"E aro ana mātau ki te pātui tonu me te kaunihera ā-rohe, ngā kainoho, ngā pakihi whakaaro ōrite me ngā rōpū hapori ki te whakapai ake i tō tātau taiao mā te whakatō rākau."
Warren Riley Ōtautahi	"I neke te peka o Ōtautahi ki tētahi whare hou i te Paengawhāwhā 2015. He maha ngā āhuatanga 'kākāriki' o te whare e āwhina nei kia tino tōtika ake te whakamahia pūngao o tō mātau peka."		

I te hapori

"Mai anō tō mātau mōhio ki tō mātau tūranga ki te āwhina i ngā hapori e mahi nei mātau, ā, kua whakarite mātau ki te whai i tētahi aronga ā-motu, ā-rohe hoki ki ā mātau mahi tūhonohono.

He whānui ngā whakahaere hapori, whakahaere aroha me ngā tāngata takitahi. Ko ō mātau tari peka tonu

kei te whakahaere i ā rātau ake mahi tūhonohono i ō rātau rohe, ā, ko ngā mahi tūhonohono ā-motu ka whakahaerehia ka riro mā te tari matua i Tāmaki Makaurau e mahi.

Ka tuku whakaaro mātau ki aua whakahaere aroha e whakaaro ana mātau ka whai hua ā mātau whakaaro mā te tuku hua, ratonga, haumi hāngai rānei. Ka tino hiahia mātau ki te tautoko i ngā whakahaere me ngā tāngata e

aro ana ki te taiao me rātau kei ngā hākinakina, ā, kua kite mātau ko ngā pātuitanga papai rawa ko ērā e taea e mātau te whakauru ā mātau kaimahi me ngā kiritaki ki ngā kaupapa mahi moni.

Ko te mea kē pērā i ngā pakihi katoa, kei roto mātau i te hapori, ā, kia mātau he kawenga taketake ki te tuku tautoko."

Mike Pollok

Unicorn Foundation New Zealand

Te eke pahikara mō te mate pukupuku NET

Ehara i te mahi māmā te eke pahikara i Te Ika-a-Māui mai i runga ki raro, engari he mahi noa tēnei mō te kapa Ricoh i eke pahikara, i te Paengawhāwhā 2015, hei kōhi moni, hei whakaaraara mōhio mō te hunga e pāngia ana e ngā puku neuroendocrine.

Ehara ko te uru ki te whakapātari eke pahikara o te Tour of New Zealand te mahi a te nuinga o ngā kamupene e rapu ana ki te tautoko i tētahi kaupapa aroha. Engari koinā tonu te hiahia o ngā kaieke 15 o te kapa Ricoh whānui, tae atu ki te Tumuaki Kaiwhakahaere Mike Pollok me ngā kaiārahi Ricoh.

E 700km i ekehia e te kapa Ricoh, ā, \$20,000 ngā moni i kohia mai i te tapeke o te \$115,000 hei āwhina ki te utu i ngā utauta tātari hei whakatau i ngā puku neuroendocrine (e mōhiotia ana anō ko

te mate pukupuku NET) me te tautuhi i te whakamaimoatanga pai rawa.

I kī te Pouārahi o Unicorn Foundation NZ, a Siobhan Conroy, nā tēnei taiopenga i tutuki i te whakahaere ana whāinga ki te whakatū i tētahi momo tātari PET e tino hiahia ana mā ngā tūrora e pāngia ana e te mate pukupuku neuroendocrine.

"I mua, ka mate ngā tūrora ki te utu i tā rātau ake haere ki Poipiripi kia tātarihia mai i reira. Mai i te hokotanga mai i te hangarau, 140 ngā tūrora mate pukupuku NET o Aotearoa i whiwhi i te tātari, ā, he whakatutukitanga nui tēnei.

Ko tā mātau whāinga i muri mai ko te whakatū i te whakamaimoatanga PRRT whai ake ki konei i Aotearoa. I tēnei wā me kimi ngā tūrora mate pukupuku NET i te \$50,000 ka haere

ki Poipiripi mō ngā marama maha ki te whiwhi whakamaimoatanga. Ko tā mātau e whai nei kia wātea mai ngā whakamaimoatanga i tēnei taha o Te Tai-o-Rehua i roto i ēnei tau e rua."

Haere ki www.unicornfoundation.org.nz/ mō ētahi kōrero me te tautoko i tēnei kaupapa whakahirahira.



Tākuta Malcolm Leggett rāua ko Siobhan Conroy

Unicorn Foundation
Seeking the cure for
Neuroendocrine Cancers

Fred Hollows

E whakahī ana a Ricoh ki te tautoko haere tonu i te Fred Hollows Foundation ko tōna whakatakanga nei ko te whakaora anō i te kite o te hunga kāpō mate arotahi i ngā whenua pōhara.

I te wāhanga pūrongo tau, i whakahaerehia e ngā kaimahi ngā kai roro i ngā pāparakāuta me tētahi rāwhara kaimahi ā-motu (me ngā taonga i whakaarohia mai e ngā kaiwhakarato arohanui pēnei i a Vodafone, PB Technologies me Millennium Hotel Group), hei kōhi moni mō tēnei kaupapa hira.

I te tau 2015/16 \$12,260 i kohia e mātau—he weherua i kohia e ngā kaimahi he weherua i ōrite te tāpiri mai e Ricoh New Zealand.

 **The Fred Hollows Foundation NZ**



Mike Pollok me Andrew Bell, Tumuaki Matua o te Fred Hollows Foundation, i te tau 2015.



Mai i te 2009, 10,000 ngā tipu tūturu i whakatōhia e te peka o Te Papaioea i te Whenua Rāhui o Titoki, Te Papaioea.

Te tūhonohono ki te haponi ā-rohe

Te Papaioea

Kei te tuku pūtea tautoko tonu te peka Ricoh o Te Papaioea ki te kaupapa Green Corridors, e whai nei ki te whakarākei i ngā wāhi ngahere tūturu e pātata ana ki ngā kōawa me ngā awa hei whakapai ake i te mauri o te wai me te waihanga wāhi kākāriki. Mai i te 2009, 10,000 ngā tipu tūturu i whakatōhia e rātau i te Whenua Rāhui o Titoki, Te Papaioea.



Kirikirihoa

E tautoko ana a Ricoh Hamilton i te Oma Ngahau o Waipā, e kōhi moni ana mā Cambridge Lifeskills, he whakahaere e whakarato tuku kōrero koreutu ana mā ngā tamariki, taiohi hoki atu ki te 15 tau e pokea ana e ngā raruraru pēnei i te whakaweti, te tūkinotanga me ngā raruraru whānau.



Ōtepoti

E tautoko ana a Ricoh Dunedin i te Otago Community Hospice, e whakarato manaakitanga ana me ngā tautoko ā-haponi, motuhake ki te hunga e hiahia ana.



Ōtautahi

E tautoko ana a Ricoh Christchurch i te kaupapa Keep New Zealand Beautiful, otirā tana kaupapa Clean Up Week. I tēnei tau, i haere ngā kaimahi me ō rātau whānau ki te ākau ki te whakapai haere i Kaiaua, ā, neke atu i te 250 kirokaramu para i whakawāteahia e rātau.



Te Whanganui-a-Tara

E tautoko ana a Ricoh Wellington i te Riding for the Disabled, he waihanga whai wāhitanga mā ngā tamariki me ngā pakeke he uauatanga ā-tinana, ā-hinengaro, ā-kare ā-roto hoki ō rātau kia whai wāhi mai ki ngā hōiho ki te whakapiki kaha, motuhaketanga, kiritau hoki.



Te taiao

E whakapono ana mātau he mea nui kia mōhio mātau ki tō mātau pānga, nō reira ka inea e mātau i ia tau. Kua whakawhiwhia a Ricoh ki te tohu carbonZero, ā, e wehea ana ā mātau mahi pakihi ki ngā wāhanga e rua: whakahaere me te ratonga.

He tirohanga o ā mātau kaupapa toitūtanga 2016

- I hōparahia ngā raupara putu pētere ā-taiao ki ngā peka katoa mō te whakawātea haumaruru i ngā pētere me ngā ī-para o te peka.
- I hōparahia ngā whakangungu Pūnaha Whakahaerenga Taiao mō te rōpū toitūtanga o te tari matua me ngā Kaitaunaki Toitūtanga i āhei ai ia kaitaunaki ki te ōtita i te anga whakamua tētahi ki tētahi.



Te tapuwae o tō mātau whakahaere

Mō te mutunga tau 31 Poutūterangi 2016 he 2,099.47 tana o te waro hāora rua ōrite (tCO₂e) tā mātau tapuwae waro ā-whakahaere. He hekenga tēnei o te 375.1 tCO₂e mai i te tau mutunga 31 Poutūterangi 2015, e ōrite ana ki te 49 rerenga hoki anō mai i Tāmaki Makaurau ki Rānana.



Ngā puna tukunga waro nui

Ko ā mātau puna tukunga waro nui ko te: utanga, hinu, haere rerenga, hiko me te para. E whakaaturia ana ēnei i te ripanga i raro.

Mā te titiro ki tā mātau mahinga 2015/2016 ki te tau 2014/2015, ka kitea he tino nui ngā hekenga o te utanga me ngā tukunga hinu, ā, i piki ngā para mā te 19 ōrau (i pēnei ai nā te mea he maha ake ngā peka i tēnei tau i kohia mai ai ngā para tēnā i tērā tau).

Ko ngā hekenga utanga, otirā ngā utanga huarahi, i heipū ai nā te pai ake o te kōunga o ngā raraunga, ā, he maha ngā kaupapa i āwhina ki te whakaiti i te hekenga o te whakapeto hinu, tae atu ki: te tiroiro anō i ngā tūnga e hiahia ana i ngā waka kamupene; te whakauru

mai i ngā aratohu pūmau ake mō te whakamahi ā-pakihi, ā-whaiaro i ngā waka kamupene; te whakakapi i ngā waka kaihoiho hinu nā te tawhito, pakaru haere rānei; ā, te whakarite ka oti ngā whakamahinga, whakahāngai wira hoki i te wā tika kia kore ai e kaihoiho hinu.

	TAU TŪĀPAPA 2012/2013 TonnesCO ₂ e	2013/2014 TonnesCO ₂ e	2014/2015 TonnesCO ₂ e	2015/2016 TonnesCO ₂ e	% huringa FY1516 c/w FY14/15
Utanga	884.46	1,046.55	923.57	694.99	-25%
Haere Rerenga	628.43	566.08	568.08	560.16	-1%
Para	59.13	61.34	49.85	59.23	19%
Hinu	997.18	1,111.30	716.15	569.40	-20%
Hiko	169.54	140.20	162.779	163.44	0%
Tētahi atu	31.45	41.73	54.51	53.24	-2%
TAPEKE	2,770.19	2,967.19	2,475.44	2,099.47	-15%

Hei mōhio:

- Ko ngā raraunga i kohia hei whakahiato mai i ngā ine tukunga i riro mai i raro i ngā paerewa o te kaupapa carbonZero, ā, i whakaūhia ki tetahi Manatū Paerewa mō te whakahaere.
- Ko tētahi atu ko te: waka tūmataiti (ngā kerēme kiromita), eke tekehi me te haere mā runga waka rīhi.

Tā mātau tapuwae ratonga

He wehe kē tā mātau ine i te wāhanga ratonga o tā mātau pakihi. Arā, ko ngā mea katoa e pā ana ki te whakamahi, te tiaki me te whakawātea i ngā pūrere tā e rīhitia ana e ā mātau kiritaki.

Ka inea e mātau ngā tukunga mā ia whārangi tā e mōhioia ana he 'pāwhiri'. Hei wāhanga o tā mātau tapuwae ratonga, ka whakaineinehia e mātau ngā tukunga e pā ana ki te hiko e whakamahia ana e ā mātau kiritaki hei whakahere i te pūrere, engari kaua ngā tukunga e pā ana ki te pepa. I whakaritea e mātau kia uru mai te hiko i te mea ka whakapeto hiko ā mātau mīhini ahakoa e hia te rahinga pepa ka whakamahia e rātau.

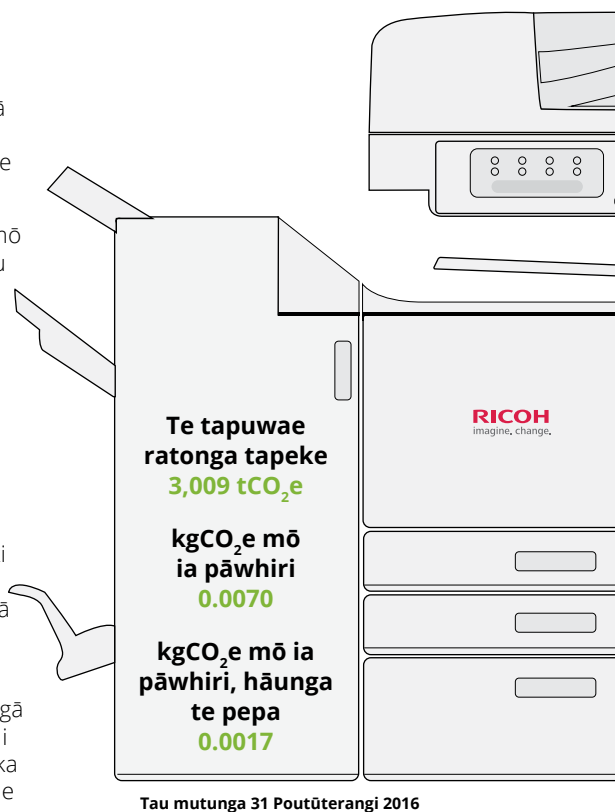
Kei te mōhio mātau he kaha te whakamahia o te pepa e ā mātau mīhini tā, engari kāore ō mātau mana ki te whakahaere i tēnei, arā, te rahinga me te momo pepa ka whakamahia. Ahakoa kāore e taea e mātau te whakahaere te whakapaunga pepa a ā mātau kiritaki, ka ngana mātau ki te whakaawe i a rātau mā te whakarite i ngā mīhini kia tāhia

taunoatia ngā taha e rua o te pepa. Mā te tā taha rua, ka taea e ngā kiritaki te whakaheke ā rātau tukunga waro mā te 25 ōrau, neke atu rānei.

Ko tētahi atu whakaawenga a mātau mō te whakapeto pepa ko te arotake auau i ngā mea e tāhia ana e ā mātau kiritaki me te wero i a rātau kia iti ake tā rātau tā i a tātau e ahu atu ana ki tētahi anamata tā-kore.

Ko te nuinga o ngā wāhi tā ā-tari he whai utauta whakahaerenga pēnei i te 'Whakamau Tuku Tā', e taea e ngā kaiwhakamahi te pupuri ngā mahi tā i te mīhini kia tukuna rā anōtia e tētahi waehe. Kua kite mātau i ētahi kiritaki e whakaiti ana i ā rātau rahinga tā mā te 20 ōrau neke atu mā te whakakā noa i tēnei āhuahira.

Ko ngā hua nui o ngā āhuahira pēnei ko te āhei ki te muku i ngā tānga hē, ngā tānga rānei kua kore e hiahiaia i mua i te tānga. He whakaiti anō i ngā tānga ka ngaro—ko taua āhua rā ina kohia mai e tētahi ngā tanga a tō rātau hoa i te taha o ā rātau ake, ā, kua mate ki te tā anō.



Whakaiti i ā mātau wahanga

Ko te whāinga ko te whakaiti i tā mātau tapuwae waro i ia tau me te whakarite ūnga mō te tapuwae a te whakahaere me te ratonga.

Tā te whakahaere

Ko te ūnga o tō mātau whakahaere ko te whakaiti tCO₂e mō ia miriona tāra whiwhinga peke mā te toru ōrau i te tau.

I te tau pūtea 2015/2016 he 10.5 ōrau te whakaitinga i taea e mātau e ai ki te

tau o mua me te 38 ōrau whakaitinga i te wā whā tau mai i te tau taketake 2012/2013.

Ko te pūtake o ēnei whakaitinga nui i ahu mai i tā mātau nekehanga ki tō mātau

tari Kākāriki Whetū 5 i te mutunga o te tau 2014, ā, ko tēnei tau pūrongo te tau tuatahi whānui i te whare pūngao māia.

	TP12/13	TP13/14	TP14/15	TP15/16
Tukunga peke tapeke (tCO₂e) mō ia \$M whiwhinga peke	24.89	22.88	17.19	15.38

Ratonga

Ko te ūnga ratonga ko te whakaiti i te tCO₂e mō ia pāwhiri mā te toru ōrau i te tau.

Mō ā mātau otinga pai rawa mō ia pāwhiri, hāunga te pepa, i whiwhi mātau i te whakaitinga o te 43 ōrau ki te tau o mua me te whakaitinga tapeke o te 64 ōrau i roto i te whā tau mai i te tau

taketake 2012/2013. Engari, te āhua nei i puta ai pea tēnei whakaitinga nā ngā utauta ine pai ake kaua kē i te whakaitinga tūturu ake.

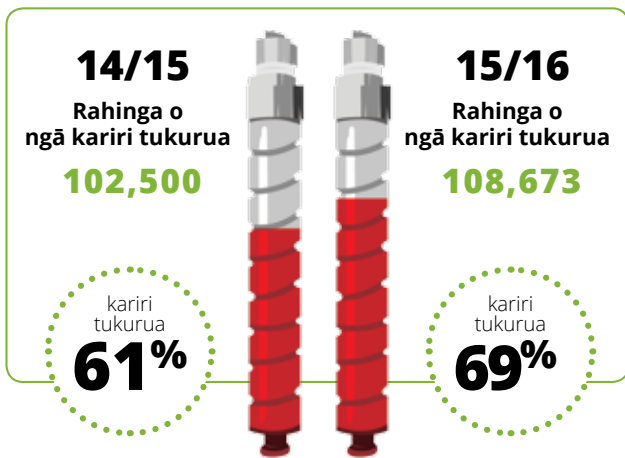
Hei tauria, ka taea e mātau ngā whakapetonga hiko te pūrongo tōtika ake ināianei mō ā mātau pūrere tā me te ine

i te whakapetonga hiko ake o ngā pūrere (me te uru mai o ngā aratau tūtātari me te penapena hiko) kaua te whakamahi i te mōrahi.

	TP 12/13	TP13/14	TP14/15	TP15/16
Tapuwae ratonga, hāunga te pepa (tCO₂e)	3,769	3,768	2,642	3,009
kgCO₂e mō ia pāwhiri, hāunga te pepa	0.0047	0.0045	0.0030	0.0017

Tukurua pauratuhi

I te mōhio anō koe: Ka taea ia kariri pauratuhi Ricoh ka whakamahia e koe te tukurua mō te koreutu? Mēnā kāore anō kia rehita koe, rehita mō te pūnaha tukurua koreutu i www.ricoh.co.nz/About/Environment/Toner Cartridge Recycling.



Tukurua ī-para

I te mōhio anō koe: E 241,828.8 kg ngā mīhini mōnehu i tukurua e mātau i te tau 2015/2016? He rite tēnei ki ngā mīhini 2000.

Ko te tau 2016 te tau whānui tuatahi i mahi mātau me tētahi kaiwhakarato kotahi, Croxley Recycling, ki te kōhi me te whakahaere i ā mātau ī-para. Nā tēnei kaupapa ā-motu kua pai ake te māia me te kitea o tō mātau kaha ki te whakahaere rahinga nui ake.






"I te hipatanga o te tau, kei te ū tonu a Ricoh ki tana pūmāutanga mō te toitūtanga me te tukurua. Kei te tipu haere tonu te rahinga o ngā hua tukurua, ā, kua uru mai te whatunga kaiwhakarato o Ricoh ināianei, he ratonga ā-motu whānui tūturu te kaupapa. Ko te kaupapa rehita Kōwhiringa Taiao anake te kaupapa pēnei i Aotearoa."

Wayne Grieve,
Kaiwhakahaere, Croxley Recycling



Ngā pou tarāwaho whakahaerenga pakihi

E whakahaerehia ana e mātau ā mātau pakihi mā te whakamahi i ngā pou tarāwaho maha, e rārangi mai ana i raro.

Pou Tarāwaho	Whakamāramatanga
	Rēhita tuatahitia 2001 ISO 14001 – Environment Management System He whakarite he pūnaha tā mātau hei whakaiti tūkinotanga i te taiao.
	I rēhita tuatahitia 2004 ISO 27001 – Information Security Management System E whakatairanga ana te ISMS a Ricoh: Matatapu: Ka taea anake ngā kōrero mā ngā kaiwhakamahi whai mana Pono: He tōtika me te whānui ngā kōrero Wāteatanga: Ka taea ngā kōrero ina hiahia ana e ngā kaiwhakamahi whai mana.
	Mai i te 2004 Environmental Choice Ko Environmental Choice te tapanga taiao whai mana o Aotearoa. Ahakoa e whakahaerehia motuhakehia ana, he mea tīmata, e tautokona ana hoki e te Kāwanatanga o Aotearoa. He āhukahuka i te piki haere o te kaha o ngā kaiwhakanao ki te whakaiti i ngā pānga taiao o ā rātau hua.
	Mai i 2008 carbonNZ Zero He whakaūnga motuhake o tō mātau pūmau ki te ine me te whakaiti i ā mātau tukunga kati haurehu.
	Mai i 2014 Workplace Safety Management Practices (WSMP) E āhukahuka ana te WSMP i ngā pakihi wawaenga ki te nui i whakatinana i ngā pūnaha hauora me te haumarū.

Te heipūtanga mai o te hurihuringa: Te whakahaere i ngā mea tāparepare

He take nui te ōhanga hurihuri i tēnei wā i ngā tēpu poari puta noa i te ao engari he aha, ā, he aha i heipū ai tōna whakamanatanga?

Ko te ōhanga hurihuri te rongoā ki te taurira 'para-tango-mahi' e kaha tonu ana i tēnei wā. He whakarite i ngā rawa me ngā hua kia uara-teitei te hurihuri mō te wā tino roa rawa mā te whakanui ake i te oranga whakamahi, te arotau i te whakamahinga, e whakarite ana kei te tino whakamahia.

Kei te mārama haere ake ko te ōhanga hurihuri anake pea te taurira tipu toitū whaihua kei a tātau, ina he wehe i te tipu mai i te whakamahinga o ngā rawa mutu mārika, ohooho hoki. Tāpiri ki tēnei ko te mea kē i ahu mai ngā mātāpono ōhanga me ngā taurira pakihi tāpiri i ngā kaikōkiri pakihi whānui pēnei i te pikinga o te kakama me te auahatanga, me te whakaiti whakapaunga, ko te kōrero kē e hāra i te mea *mēnā* ka taea he ōhanga hurihuri, engari *āhea*.

Ehara tēnei i te āhuetanga hou. Nā Walter Stahel, e kīia ana ko ia te ruanuku o te ōhanga hurihuri, i tito te kīanga "ko ngā rawa o āpōpō ngā taonga o tēnei rā i ngā utu rauemi onanahi" i ngā tau tīmatanga o te 1970. E whakamahi ana ngā whakahaere pēnei i a Ricoh i tētahi taurira ōhanga hurihuri hei whakapiki i te kakama me te whakarato i te uara kiritaki nui ake mō ngā tau maha rawa. Hei taurira, nā te kōwhiringa ratonga rīhi a Ricoh ka mau tonu i a ia ana pūrere whakamahinga maha, me te whakanui ake i ngā oranga whakamahi me te tango i ngā wāhanga i te toremitanga hei whakamahi anō.

Kei te kite anō mātau kua āhukahuka ngā kāwanatanga puta noa i te ao i ngā hua ōhanga me te taiao o te ōhanga hurihuri, otirā mā te tuku mahi. Kei te tautoko tēnei i te heipūtanga o te whakamanatanga whānui o te kaupapa.

Hei taurira, i whakaputaina e te Uniana o Uropi i te Hakihea 2015 kei te haumi ia i te 6 piriona tāra Ūro hei kauneke i te kaha 'hurihuri' o ana mema whakahaere. Tērā pea ko tētahi tauritanga pai ake ki Aotearoa i puta i a Kotimana, ā, i te Huitanguru o tēnei tau i whakaputaina he haumi o te 70 miriona tāra GBP

hei whakapiki i ngā pūkenga o ngā whakahaere o te rohe ki te whakataetae i roto i tētahi ōhanga hurihuri.

Kei te kite anō mātau i tēnei kāroti' o ngā haumitanga ka taea a ngā kāwanatanga e whakahiatohia ana me tētahi 'rākau' ture pēnei i a Wiwi i whakaputaina ina tata nei kei te rāhuitia ngā para kai mai i ngā hokomaha.

Tērā pea ko tētahi o ngā tohu nui o te heipūtanga o ngā rongoā hurihuri mai i te tirohanga pakihi kei te toa kaihoko nui rawa, a Ikea. He tino nui ngā ūnga tipuranga mō te 2020 i kīia e tana Amokapua Toitūtanga ina tata nei: "Ki te titiro ao whānui tātau, i te Taiuru kua eke pea tātau ki te kōtihi o ngā mea tāparepare". Nō reira, kei te hiahia a Ikea ki te whakauru mai i te āheinga whakatikatika ki ana taurira pakihi kia taea tonu e ia ngā tipuranga i te mea kua iti ake te hoko hua hou a ngā kiritaki.

I Aotearoa kei te kite tātau i te nui haere o ngā pakihi e whai ana i ngā taurira ōhanga hurihuri mai i ētahi atu rāngai. Hei taurira, kei te ngana a Phillips ki te whakamahi i te 'whakaratotanga' i te rāngai rama, i tīmatahia e te hunga pēnei i a Ricoh, mā te tukutanga 'pay per lux'. Ko tētahi atu taurira, mai i te tirohanga tīmatanga, ko te tikanga ethique, e whakamahi ana i tētahi taurira 'whakaheke rauemi'. Kua whakahikihia te hiahia mō ngā tākai tūturu o te hopi makawe (he pātara kirihou) me tētahi wāhanga 'whakakī' (wai) hei whakarato pae hopi makawe mārō.

Ka tūmanako koe, ka kitea noatia ngā taurira pakihi ōhanga hurihuri i te wāhanga Ricoh Mega Efficiency Innovation i te NZI Sustainable Business Network Awards. I roto i ngā whiringa-toa 2016 ko te whakahaere para-ki-uara TerraCycle me te 'ōhanga tuari' MyCarYourRental, e taea ai e ngā rangatira waka te rīhi ō rātau waka ina kore e whakamahia ana.

Kāore e kore ka uru noa mai te ōhanga hurihuri i te mea kei te tūhono noa ana mātāpono ki ngā mahinga pakihi pai.

Kei te haumi tonu te kāwanatanga me te aro mai hoki, ā, kei te mōhio haere ngā kiritaki he rongoā tēnei hei whakaiti i ngā 'mea' kāore i te tino

hiahia. Me te aha, kua mārama te kitea o ngā pēhitanga ki ngā rohenga aorangi nā te tipuranga tau-pori me te whakapetotanga. Kei te mahi ngātahi te Sustainable Business Network me ana mema, pēnei i a Ricoh, hei whakarite ka tere ake te uru mai.

“Ko te ōhanga hurihuri te rongoā ki te taurira 'para-tango-mahi' e kaha tonu ana i tēnei wā. He whakarite i ngā rawa me ngā hua kia uara-teitei te hurihuri mō te wā tino roa rawa mā te whakanui ake i te oranga whakamahi, te arotau i te whakamahinga, e whakarite ana kei te tino whakamahia.”



James Griffin
Pou Whakahaere Whatunga
SBN

sustainable
BUSINESS NETWORK
Reshaping Profit

Te waihanga i tētahi ohu mamati punenga me te Robotic Process Automation

Ahakoia ka warea pea ētahi tāngata e te moe i te tukanga pakihi aunoa, he whakaaroarotanga hira mō ngā whakahaere katoa kei te hiahia ki te waihanga i tōna anamata toitūtanga me te takatū kia puta tō ihu i mua i ō kaiwhakataetae.

Ko te mea pōuri, e ai ki ngā tātuiranga kua uru kē mai pea te āhuetanga hongehongea me te kī a tētahi kamupene ratonga hangarau kei te whakaaunoatia ngā whakahaere i tēnei wā, ko te tau toharite, he 25—40 ōrau o ā rātau mahi.

He aha ngā tauārai? He maha rawa pea, engari ko tētahi wāhi o te hangarau whakaaunoa kei te kaha haere ko te Robotic Process Automation, RPA rānei.

Hei tautuhi i te RPA me tīmata ahau ki te kōrero mō ngā mea ehara i te RPA. Ahakoia he ngahau te whakaari ā-hinengaro, ehara ko ngā mihini karetao e noho ana i ngā tēpu! E whakamahia ana e te RPA ngā mihini karetao pūmanawa hei whakaaunoa i ngā mahi hokihoki noa o te kohikohi me te whakauru raraunga i waenga tomokanga, paetukutuku, taipānga roto, pūnaha hoki, ā, i momoho te whakamahi mā ngā kiritaki, kaimahi rānei hei

whakapakari, tono moni taurewa, kohikohi nama me te whakarite amuamu.

E toru ngā hua nui o te RPA: He whakapiki whakaputaranga, kakama hoki; he whakaheke hapa utu nui; ā, he whakawātea mai i ngā kaimahi ki ngā mahi pai whai hua ake.

Hei tauira, ka tuku mahi he kamupene ki ngā māngai ratonga kiritaki maha i te nuinga o te wā he kohikohi ā-ringa me te whakauru kōrero i waenga pūnaha hei tukatuka ota. Mā te RPA, ka taea ēnei mahi te whakaōrite me te weherua i te wā e whakapauhia ana, e taea ai ngā māngai te mahi i ā rātau mahi pai—te whakawhitiwhiti me te āwhina i ngā kiritaki.

Ko tētahi o ngā tino āhuetanga o te RPA ko tana noho mai i runga i ngā hangarau onāiane i te whakahaere, ā, kāore he whakararuraru, kāore hoki he wā roa mō te whakapakari.

He kaikōkiri hira kia kakama tētahi whakahaere e whai ana i te toitūtanga, ā, he pānga nui tō ngā hua pēnei i te Kapow a Kofax (tana rongoā RPA) me tana pūhara Total Agility i Aotearoa nei.

“Hei tautuhi i te RPA me tīmata ahau ki te kōrero mō ngā mea ehara i te RPA. Ahakoia he ngahau te whakaari ā-hinengaro, ehara ko ngā mihini karetao e noho ana i ngā tēpu!”

Mō ngā whakamārama he pēhea te takahuri a RPA i ō tukatuka pakihi, whakapā mai ki jcorles@ricoh.co.nz



Justin Corles
Pou Whakahaere,
Ngā Rongoā Pakihi



Te noho i tētahi ao tūhonohono noa

Kua tikanga noa te mahi mai i ngā wāhi katoa. Kātahi anō ka tino whai kaha tātau nā te waea atamai i tō pūkoro, pāhi rānei, ā, he tautoko i te whakaaro kei te wātea ngā kaimahi i ia haora o ia rā. Ahakoa he mea pai, he hē rānei he take anō tērā, heoi ko te mea kē ka taea e te ao rorohiko te tūhonohono, i runga hoki i te ngāwari.

Te titiro ki ngā tapeke matua e toru mā te tirohanga tangata, he māmā noa te kite mā te mahi mai i tawhiti ka rata ki ngā mātua mahi, tētahi wāhanga noa o te ohumahi ngāwari o ēnei rā.

Ko te hangarau te kaiwhakaahei e pā ana ki te wāhi mahi ngāwari, ahakoa kei te kāinga, ngā wāhi noho taunga waka rererangi, ngā whare kawhe, tō waka rānei. He aha te kaitūhono i ēnei wāhi tino rerekē? He tūhononga ipurangi noa iho.

Ahakoa he māmā noa pea, he mea nui kia maumahara ehara i te mea ka puta noa mai te pakihi ngāwari, tūhonohono rānei. Ko ngā whakahaere kua matatau ki tēnei i whakapau wā ki te whakamātautau i ngā pūhara hangarau rerekē e hiahia ana. Kei te mōhio tātau ka tatū ngā whakatau ao rorohiko o te nuinga o ngā tāngata nā runga i tētahi raruraru i tētahi wā whāiti. Ina taea ana, e whakatenatena ana tātau i ā mātau kiritaki kia whai wā ki te whakawhanake i tētahi mahere ao rorohiko whānui ake hei whakarite ka eke ō rātau hiahia hangarau pakihi i tēnei rā, ā, me te kotahi tau i tua atu.

Mai i te hoahoa me te waihanganga i te hanganga ao rorohiko hāngai ake me te āwhina i te ahunga o ngā pakihi ki te kapua, ka āwhina taku rōpū i ngā kiritaki kia takatū rātau mō ngā huringa tere o te hangarau pakihi, kia kaua noa e urupare ki ēnei.

Kia mārama ai ka pēhea tā mātau takahuri i tō ao rorohiko, whakapā mai ki rsmdon@ricoh.co.nz



Roly Smoldon
Ngā Rongoā Pakihi
Ngā Ratonga Ao Rorohiko



Pikitia i te uhi o muri: Gary Endacott, Toa o te Attitude Awards People's Choice Award 2013, ā, he kaiakopono pūtohe, kaitaunaki hoki mō te hunga hauā.

E tautoko ana a Ricoh New Zealand



Attitude Awards

Te whakanui i te ao me ngā whakatutukitanga
o te hunga hauā o Aotearoa.

www.AttitudeLive.com